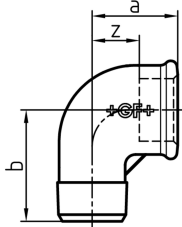


Data sheet

valid from: 6/30/17



92 Elbow 90°, equal, ISO/EN A4



EN	Dim. (inch)	Black Code	Galvanised Code	SP	GP	a (mm)	b (mm)	z (mm)
•	1/8	770 092 101	770 092 201	10	150	19	25	12
•	1/4	770 092 102	770 092 202	10	300	21	28	11
•	3/8	770 092 103	770 092 203	10	200	25	32	15
•	1/2	770 092 104	770 092 204	10	100	28	37	15
•	3/4	770 092 105	770 092 205	10	70	33	43	18
•	1	770 092 106	770 092 206	10	30	38	52	21
•	1 1/4	770 092 107	770 092 207	0	25	45	60	26
•	1 1/2	770 092 108	770 092 208	0	30	50	65	31
•	2	770 092 109	770 092 209	0	20	58	74	34
•	2 1/2	770 092 110	770 092 210	0	10	69	88	42
•	3	770 092 111	770 092 211	0	6	78	98	48
•	4	770 092 112	770 092 212	0	4	96	118	60

The technical data are not binding. They neither constitute expressly warranted characteristics nor guaranteed properties nor a guaranteed durability. They are subject to modification. Our General Terms of Sale apply.

Georg Fischer Piping Systems Ltd, Postfach, CH-8201 Schaffhausen/Switzerland

Phone +41 -(0)52-631 1111

e-mail: info.ps@georgfischer.com

Internet: <http://www.gfps.com>